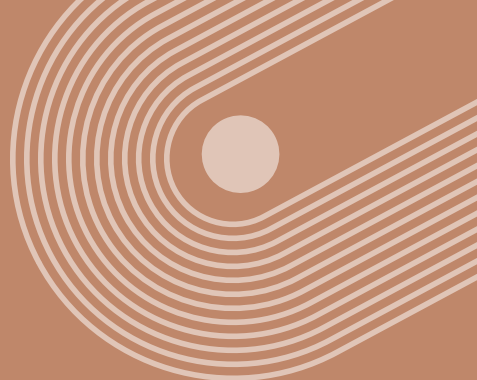
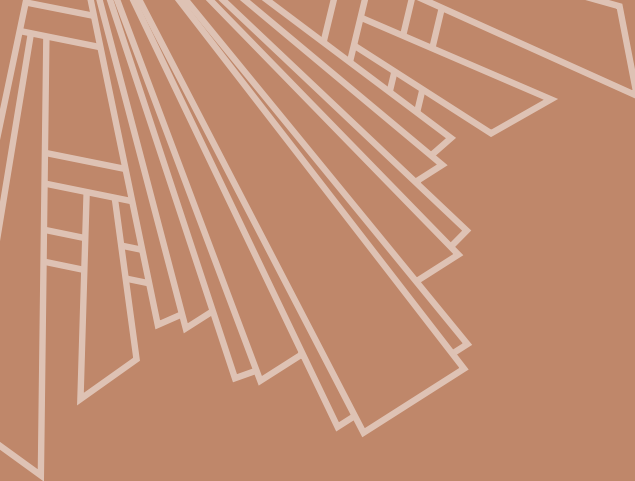




MAKING
BATHROOMS
BEAUTIFUL

Trend Guide 2024







Welcome.

Welcome to the HiB Trends Guide for 2024. This year, we're setting our sights on four new, distinct and captivating trends that promise to reshape your bathroom.

You can learn how to apply these designs in your own home and create a stylish, modern look for your bathroom space.

Join us as we unveil the trends that will define 2024, sparking your imagination and transforming your interiors.



Our Designers' **Favourite** Picks.

Curves.

Mid-century is having its moment which means this year we are embracing our curves. There is more to the inviting shape that meets the eye, with curves having a positive psychological effect on our emotions. Influenced by nature, we feel more connected to our environment therefore instilling a sense of comfort, warmth and beauty.

You can choose small accent pieces like our Opia Vessel basin range or add some drama to your space with our Alba Mirror.

Colours.

We've seen an influx of colour entering the bathroom over the last few years and the next is no different. We are toning it down a notch and taking inspiration from outside. Greens and blues remain prominent colours but with grey undertones, see our Dusky Blue and Sage Green finishes in our Veles range.

Orange and pink tones will have their moment in 2024 with nature-inspired terracotta, pops of Dusky Pink and our new favourite Rich Burgundy as seen in our Fabrica range. Colour can be used just about anywhere in your bathroom space, from furniture to basins to mirrors so keep an eye out this year for our new products.





Metallics.

Metallics can make or break a scheme. Every bathroom needs brassware, and we love seeing more and more colour options on the market. For those who love a cooler tone, we think gunmetal is the new black. A softer finish that still has that darker hue and a lightly brushed finish for some on trend texture.

On the other end of the spectrum, brushed brass is a classic finish that has been dominating the warm metallics market. Though we don't see brushed brass going anywhere, we've got our eyes on bronze, an alternative warm metallic with a contemporary edge.

Minimalism.

The era of new minimalism, we aren't talking bare walls, vacant shelves and the overwhelming feeling of emptiness. Taking the core values of minimalism of simplicity and practicality and applying it to your aesthetic. We are removing the clutter, freeing ourselves of excess to achieve the ultimate home environment for peace and serenity.

It's important to choose products that support this mantra, consider what storage you have available to hide away essential items, our Veles furniture range has tons of storage and even features a drawer divider to aid organisation. A mirror cabinet is always a useful option, for great storage and high design we love our Euna Cabinet range.



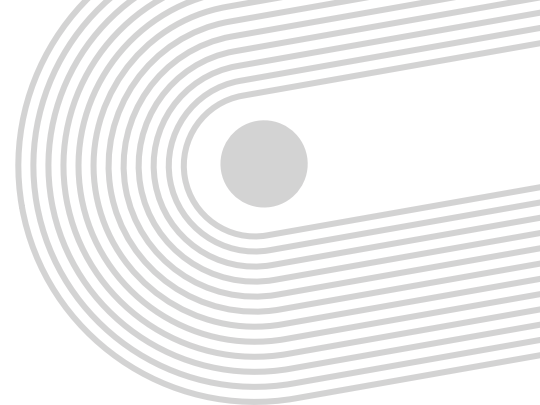




2024

Our
Designers'
Trends
Predictions





Exhale.

Nature-inspired interior design trends are flourishing. Moving on from last year's 'Petrichor' trend the new '**Exhale**' theme embraces minimalism, mid-century style and neutral tones but without stuffing nature in literal form into the space.

Taking inspiration from 'California Casual', this latest interior trend is characterised by stone finishes, rounded shapes and tactile textures and a departure from rustic, handmade elements in favour of refined simplicity.



California Casual

Layering various textures creates a nuanced aesthetic that feels both effortless and comfortable, evoking a sense of nostalgia. Notably, brassware shifts away from the dominance of black to cooler tones like chrome and warmer shades such as brushed brass.

The result is an interior that harmoniously blends modern sophistication with a touch of nature's timeless allure.



Shapes:

Bold curves, linear patterns, refined.

Palette:

Cool greens, warm oranges, and stark whites.

Features:

California Casual, minimalism, mid century.

Palette.



Get the Look.

Want to enjoy the '**Exhale**' trend in your home? Explore the textures and colour palettes we've covered in our trends inspiration pages and pair them with our product suggestions to transform your space into a beautiful, stylish bathroom.

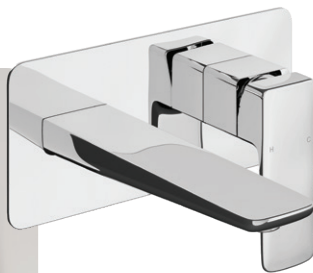


We love how the Vanquish recessed bathroom cabinet is discreetly integrated into the wall, providing plenty of storage and effective illumination. The sleek, precision illumination perfectly characterises the '**Exhale**' trend, while the tactile textures and simplicity of the Eden basins enhance that timeless effect.

*Above: Vanquish Recessed Cabinet Chrome, Atlas Wall Mounted Mixer Chrome, Eden Geometric Vessel Basin, Blend Basin Shelf Sherwood Oak.
Cut out: Eden Linear Vessel Basin*



Above: Genesis Fitted Furniture - Open Storage Unit & BTW Unit Emerald Green, Aero Floor Standing Back to Wall Toilet.
Cutout: Elara Wall Mounted Mixer



Need storage? The Eris slim cabinet is an ideal solution for keeping the bathroom serene and clutter free, while also bouncing natural light around the bathroom thanks to its mirrored doors and sides.



Above: Eris Slim 60 Cabinet.
Left: Terra Basin and Countertop Beige Clay

Consider whether you want a washbasin or vessel basin with countertop. The Terra basin and countertop colour and texture match for a seamless unified look.



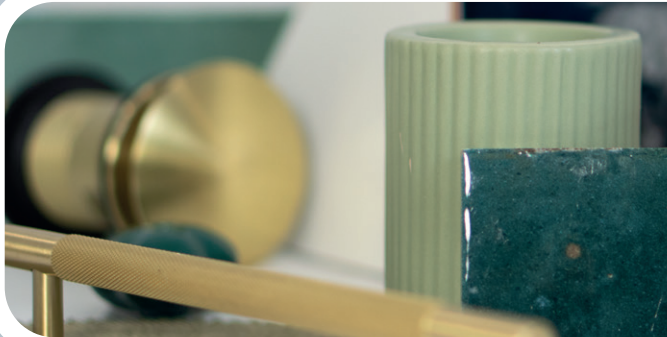




Euphoria.

The '**Euphoria**' interior design trend seamlessly blends nostalgia with contemporary design, creating a dynamic and harmonious space. Arches and curves dominate, offering a sense of fluidity and movement.

Geometric and abstract patterns add a contemporary touch, while fluted textures provide depth and dimension. Nature references, manifested through the muted, yet colourful palette, bring a breath of fresh air and connects the design to the organic world.



Dopamine Décor

The colour palette we've labelled 'dopamine décor', showcases impressive blends that evoke positive emotions. This trend embraces maximum minimalism, emphasising simplicity without sacrificing visual interest, making spaces both stylish and timeless.



Shapes:

Curves, geometric, fluted.

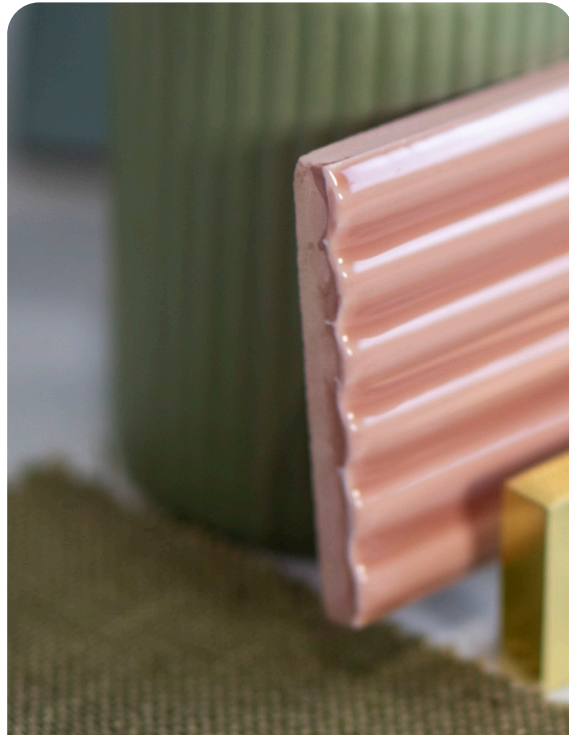
Palette:

Peachy pinks, grey blues and soft greens.

Features:

Nostalgia, colour blocking, minimalism.

Palette.



Get the Look.

Want to know how to create the 'Euphoria' trend in your bathroom? Bring the past and the present together with our trend colours and textures and pair them with our product suggestions to transform the space.



Experiment with the use of different shapes to create a fun, nostalgic look. The Cassini Round mirror has a deep border with a chamfered diffuser to create a gentle glow. Consider using furniture such as the Veles range in matt white to pair with the soft peaches and greens to make them pop.

Above: Cassini Round 80 - Cool White.

Left: Veles Standard Floor Standing Unit Matt White.



Above: Cassini Curve Mirror 140 - Warm White.
Cut out: Opia Ø32cm Vessel Basin.



Below: Solstice 80 Matt White.
Right: Bar Mixer Shower Chrome.



Left: Atlas Mono Mixer Tap
Brushed Brass.



Brassware, like the Atlas tap in Brushed Brass is perfect for adding some warmth into this cooler toned scheme complementing the **'Euphoria'** trend's muted palette.





Elements.

For those looking for an edge, **'Elements'** exhibits a stormy aesthetic using darker neutrals and cool blues to create a moody yet inviting atmosphere.

Incorporating elements of Wabi Sabi, Minimalism and Brutalism, it seamlessly blends nature's imperfections and refined engineering.

The **'Elements'** look can be achieved through the use of iron and gunmetal brassware, creating a raw and textured feel. Embracing imperfections, the trend highlights the beauty in flaws of organic materials, making them the centrepiece. Use soft ambient lighting to add character to the space and incorporate plants to summon the connection to the outdoors.



Wabi Sabi

Wabi-sabi embodies the beauty of imperfection. In an industrial bathroom, this means embracing weathered metal finishes, using imperfect, natural edges, and elements such as wood or handmade pottery.

Utilise raw materials and minimalistic design to create a serene, unrefined space that respects the passage of time and celebrates the inherent beauty of natural flaws and authenticity.



Shapes:

Organic, Asymmetry, Linear.

Palette:

Warm greys, deep blues, dusky pinks.

Features:

Wabi-Sabi, Brutalism, Minimalism.

Palette.



Get the Look.

Love the '**Elements**' trend? Bring it to life in your bathroom with our trend inspiration and suggested products to create the look.



The stone-effect texture wrapping around the Terra basin in Black Charcoal is perfect for the '**Elements**' trend, as it celebrates softer, natural textures while offering a sleek, industrial look. Pair your black brassware with a black mirror like the Solas 60 mirror to further the seamless effect.

*Above: Solas 60 Mirror Black
Right: Terra Basin Black Charcoal*



Subtle curves like ones seen in the Isoe cabinet's precision illumination make it a perfect addition for this trend. While a mixture of black accessories and wood finishes appeal to the softer industrial styling of the look.

Right: Multi Feature Shower Shelf Black



Above: Isoe 60 Cabinet

Right: Aeon 60 Unit Sherwood Oak



Above: Trim 60 Black with Genesis Fitted Furniture Carbon Grey





Enamour.

'**Enamour**', the humble cousin of Vellichor, encompasses vintage glamour and art deco to give an air of quiet, timeless elegance. Upcycling blends old and new elements for a classic contemporary aesthetic.

The '**Enamour**' trend embraces a philosophy of 'less is more' promoting a clutter-free environment, a movement some are calling 'quiet luxury'.



Vintage Glamour

This scheme exudes confidence and sophistication. Warm palettes, mixed textures and an abundance of brushed brass and bronze create a lavish yet tasteful ambiance. **'Enamour'** is a celebration of curated luxury and considered design.



Shapes:

Curves, Geometric, Abstract.

Palette:

Pink reds, warm browns and earthy neutrals.

Features:

Vintage Glamour, Art Deco, texture layering.

Palette.



Get the Look.

Want your bathroom feel luxurious using the 'Enamour' trend? Get that vintage glamour style with our guide to getting the look.



Above: Vega 40 - Cool White,
Fabica Cloakroom Unit
Rich Burgundy.
Left: Durer Mono Mixer
Brushed Brass.



Above: Euna 60 Brushed Brass.

Use metallics across the mirror and cabinet finishes, accessories and brassware to enhance that classic, quality feel. Features such as the texture of the Durer tap and the brushed brass Euna cabinet helps to tie the 'quiet luxury' scheme together.





What could be more opulent than the Rubín mirror, the mixture of curves and straight edges ensure that Rubín a distinctive style that attracts attention.

Above: Rubín 60 Brushed Brass.

Cut out: Summit Pendant Lighting Brushed Brass



Arches are massively on trend now, so why not continue the theme of curves with the Alba mirror? We love the effect of the rich burgundy Fabrica furniture range with the brushed brass handles. This combination is perfect for creating the sense of warm, sophisticated luxury.

Above: Alba 60 - Warm White.

Right: Fabrica Wall Hung Unit Rich Burgundy.



Looking ahead...

These trends can act as inspiration to inform your own bathroom redesign in 2024, offering a helpful insight and sparking creativity.

For more information and trends guidance, visit hib.co.uk



2024
hib.co.uk

See more design and trends information on our website.



T: +44 (0)20 8441 0352 E: sales@hib.co.uk
HiB Ltd Building 3, North London Business Park,
Oakleigh Road South, New Southgate, London, N11 1GN

No part of this brochure may be reprinted or duplicated without our consent. All sizes and measurements are approximate but we try to make sure that they are as accurate as possible. In the interest of continuous production development HiB reserves the right to alter specification as necessary.
HiB® is a registered trademark of HiB Ltd. E & OE.